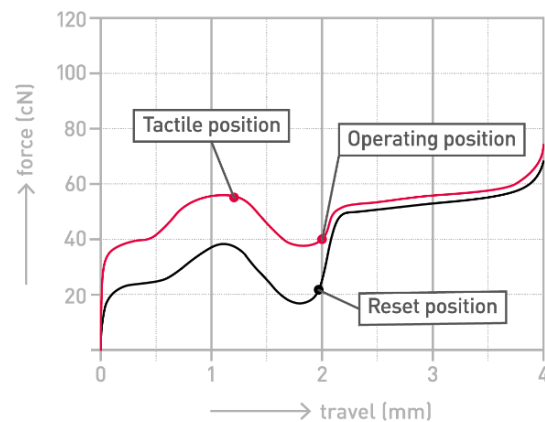


CHERRY MX RGB ERGO CLEAR

MX2A-H1NA (factory lubricated)



High-precision CHERRY MX switch with noticeable, tactile feeling

Original CHERRY MX is the world's leading precision technology for mechanical key switches. The CHERRY Gold Crosspoint contact concept and the unprecedented production quality "Made in Germany" are unique. MX inside ensures unrivalled quality, precision and reliability.

Key benefits:

- Engineered and Made in Germany
- CHERRY MX RGB Ergo Clear switch:
 - With tactile pressure point, key stroke with noticeable tactile feedback
- Factory-lubricated for optimal and smooth typing experience
- Safe and long-lasting reliability of switching performance and characteristics
- High-precision mechanical key switch based on the MX standard
- Clear stem and transparent housing
- World exclusive CHERRY Gold Crosspoint technology
- Short bounce time for high switching frequency (such as for fast typing)
- Self-cleaning contacts
- Switch resistant to dust and dirt
- Over 50 million keystrokes with no loss of quality

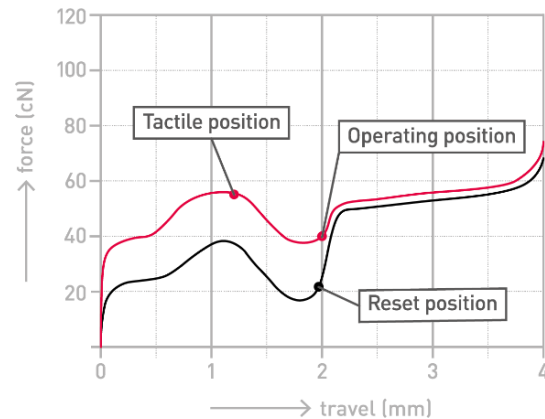
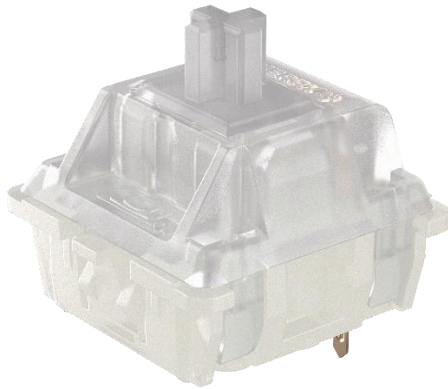
Technical Data:

- | | |
|------------------------------|--|
| • Switch Type: | MX Mechanical Switch |
| • Fastening: | Snap fastening in frame |
| • Protection class: | IP40 |
| • Operation characteristics: | tactile |
| • Switching voltage: | 5V |
| • Dielectric strength: | 500V / 50Hz |
| • Durability: | > 50 million actuations |
| • Contact configuration: | Single-pole contact |
| • Actuator travel: | 4 mm |
| • Pretravel: | 2 mm |
| • Initial force: | 35 cN |
| • Actuation force: | 40 cN |
| • Pressure point force: | 55 cN |
| • Bounce time: | typically < 1ms |
| • Minimum lead spacing: | 16 mm |
| • Lighting: | SMD LED can be mounted directly on the PCB (not included in the module), opening for SMD LED in the base |
| • Insulation materials: | Thermoplastics |
| • Spring: | Stainless steel |
| • Contacts: | High-quality gold alloy |

Cherry assumes no responsibility or liability for any errors or omissions in the content of this document. The information contained in this document is provided on an "as is" basis with no guarantees of completeness, accuracy, usefulness, or timeliness

CHERRY MX RGB ERGO CLEAR

MX2A-HC1A/B (no lubrication)



High-precision CHERRY MX switch with noticeable, tactile feeling

Original CHERRY MX is the world's leading precision technology for mechanical key switches. The CHERRY Gold Crosspoint contact concept and the unprecedented production quality "Made in Germany" are unique. MX inside ensures unrivalled quality, precision and reliability.

NOTICE: This switch comes unlubricated and should only be sold with the information that additional lubrication is required for a positive experience

Key benefits:

- Engineered and Made in Germany
- CHERRY MX RGB Ergo Clear switch:
 - With tactile pressure point, key stroke with noticeable tactile feedback
- Safe and long-lasting reliability of switching performance and characteristics
- High-precision mechanical key switch based on the MX standard
- Clear stem and transparent housing
- World exclusive CHERRY Gold Crosspoint technology
- Short bounce time for high switching frequency (such as for fast typing)
- Self-cleaning contacts
- Switch resistant to dust and dirt
- Over 50 million keystrokes with no loss of quality

Technical Data:

• Switch Type:	MX Mechanical Switch
• Fastening:	See attached table
• Protection class:	IP40
• Operation characteristics:	tactile
• Switching voltage:	5V
• Dielectric strength:	500V / 50Hz
• Durability:	> 50 million actuations
• Contact configuration:	Single-pole contact
• Actuator travel:	4 mm
• Pretravel:	2 mm
• Initial force:	35 cN
• Actuation force:	40 cN
• Pressure point force:	55 cN
• Bounce time:	typically < 1ms
• Minimum lead spacing:	16 mm
• Lighting:	SMD LED can be mounted directly on the PCB (not included in the module), opening for SMD LED in the base
• Insulation materials:	Thermoplastics
• Spring:	Stainless steel
• Contacts:	High-quality gold alloy

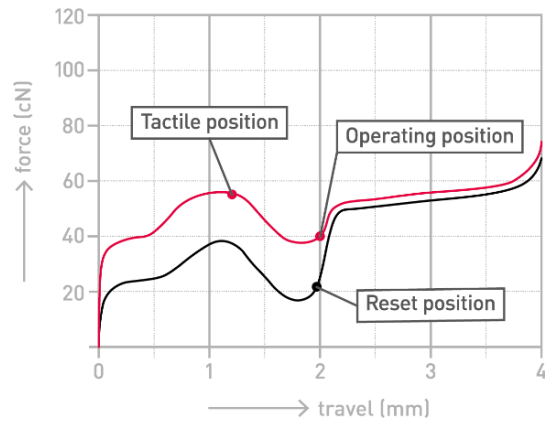
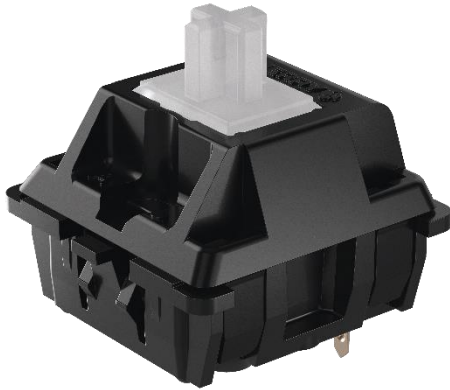
Cherry assumes no responsibility or liability for any errors or omissions in the content of this document. The information contained in this document is provided on an "as is" basis with no guarantees of completeness, accuracy, usefulness, or timeliness

Models:

	Order Number	Description	Fastening
1	MX2A-HC1A	Cherry MX RGB Ergo Clear	Snap fastening in frame
2	MX2A-HC1B	Cherry MX RGB Ergo Clear	Fixation pins in the PCB

CHERRY MX ERGO CLEAR

MX2A-H1NN (factory lubricated)



High-precision CHERRY MX switch with noticeable, tactile feeling

Original CHERRY MX is the world's leading precision technology for mechanical key switches. The CHERRY Gold Crosspoint contact concept and the unprecedented production quality "Made in Germany" are unique. MX inside ensures unrivalled quality, precision and reliability.

Key benefits:

- Engineered and Made in Germany
- CHERRY MX Ergo Clear switch:
 - With tactile pressure point, key stroke with noticeable tactile feedback
- Factory-lubricated for optimal and smooth typing experience
- Safe and long-lasting reliability of switching performance and characteristics
- High-precision mechanical key switch based on the MX standard
- Clear stem and black housing
- World exclusive CHERRY Gold Crosspoint technology
- Short bounce time for high switching frequency (such as for fast typing)
- Self-cleaning contacts
- Switch resistant to dust and dirt
- Over 50 million keystrokes with no loss of quality

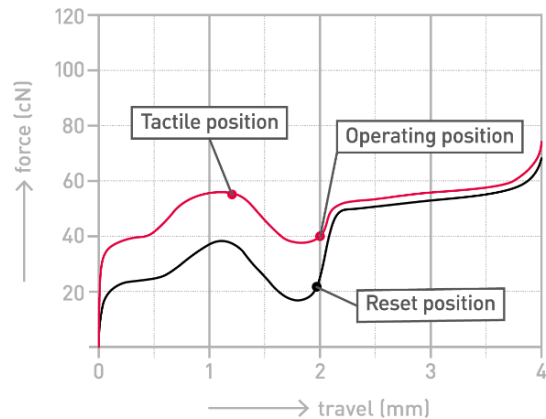
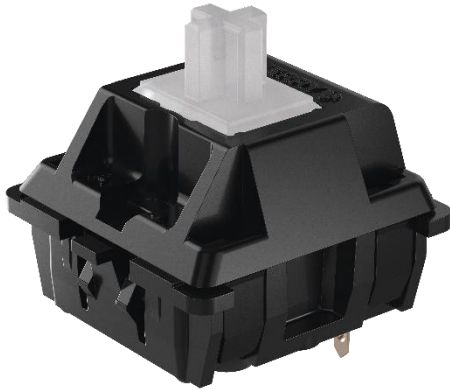
Technical Data:

- | | |
|------------------------------|---|
| • Switch Type: | MX Mechanical Switch |
| • Fastening: | Snap fastening in frame |
| • Protection class: | IP40 |
| • Operation characteristics: | tactile |
| • Switching voltage: | 5V |
| • Dielectric strength: | 500V / 50Hz |
| • Durability: | > 50 million actuations |
| • Contact configuration: | Single-pole contact |
| • Actuator travel: | 4 mm |
| • Pretravel: | 2 mm |
| • Initial force: | 35 cN |
| • Actuation force: | 40 cN |
| • Pressure point force: | 55 cN |
| • Bounce time: | typically < 1ms |
| • Minimum lead spacing: | 16 mm |
| • Lighting: | Prepared for use with 2-Pin LED (THT, through hole) |
| • Insulation materials: | Thermoplastics |
| • Spring: | Stainless steel |
| • Contacts: | High-quality gold alloy |

Cherry assumes no responsibility or liability for any errors or omissions in the content of this document. The information contained in this document is provided on an "as is" basis with no guarantees of completeness, accuracy, usefulness, or timeliness

CHERRY MX ERGO CLEAR

MX2A-HC1N/W (no lubrication)



High-precision CHERRY MX switch with noticeable, tactile feeling

Original CHERRY MX is the world's leading precision technology for mechanical key switches. The CHERRY Gold Crosspoint contact concept and the unprecedented production quality "Made in Germany" are unique. MX inside ensures unrivalled quality, precision and reliability.

NOTICE: This switch comes unlubricated and should only be sold with the information that additional lubrication is required for a positive experience

Key benefits:

- Engineered and Made in Germany
- CHERRY MX Ergo Clear switch:
 - With tactile pressure point, key stroke with noticeable tactile feedback
- Safe and long-lasting reliability of switching performance and characteristics
- High-precision mechanical key switch based on the MX standard
- Clear stem and black housing
- World exclusive CHERRY Gold Crosspoint technology
- Short bounce time for high switching frequency (such as for fast typing)
- Self-cleaning contacts
- Switch resistant to dust and dirt
- Over 50 million keystrokes with no loss of quality

Technical Data:

• Switch Type:	MX Mechanical Switch
• Fastening:	See attached table
• Protection class:	IP40
• Operation characteristics:	tactile
• Switching voltage:	5V
• Dielectric strength:	500V / 50Hz
• Durability:	> 50 million actuations
• Contact configuration:	Single-pole contact
• Actuator travel:	4 mm
• Pretravel:	2 mm
• Initial force:	35 cN
• Actuation force:	40 cN
• Pressure point force:	55 cN
• Bounce time:	typically < 1ms
• Minimum lead spacing:	16 mm
• Lighting:	Prepared for use with 2-Pin LED (THT, through hole)
• Insulation materials:	Thermoplastics
• Spring:	Stainless steel
• Contacts:	High-quality gold alloy

Cherry assumes no responsibility or liability for any errors or omissions in the content of this document. The information contained in this document is provided on an "as is" basis with no guarantees of completeness, accuracy, usefulness, or timeliness

Models:

	Order Number	Description	Fastening
1	MX2A-HC1N	Cherry MX Ergo Clear	Snap fastening in frame
2	MX2A-HC1W	Cherry MX Ergo Clear	Fixation pins in the PCB